

Plant Parts

Types of plants

Plants are living things. There are garden plants and wild plants. People look after garden plants but not wild plants.



garden plants



wild plants

Wild plants live in different places, like meadows, woodlands, hedgerows and roadsides.



meadow



woodland



hedgerow



roadside

Seasonal changes

Plants change with the seasons. In winter, many plants die or become dormant. In spring, buds open to become leaves or flowers and new plants grow from seeds and bulbs.



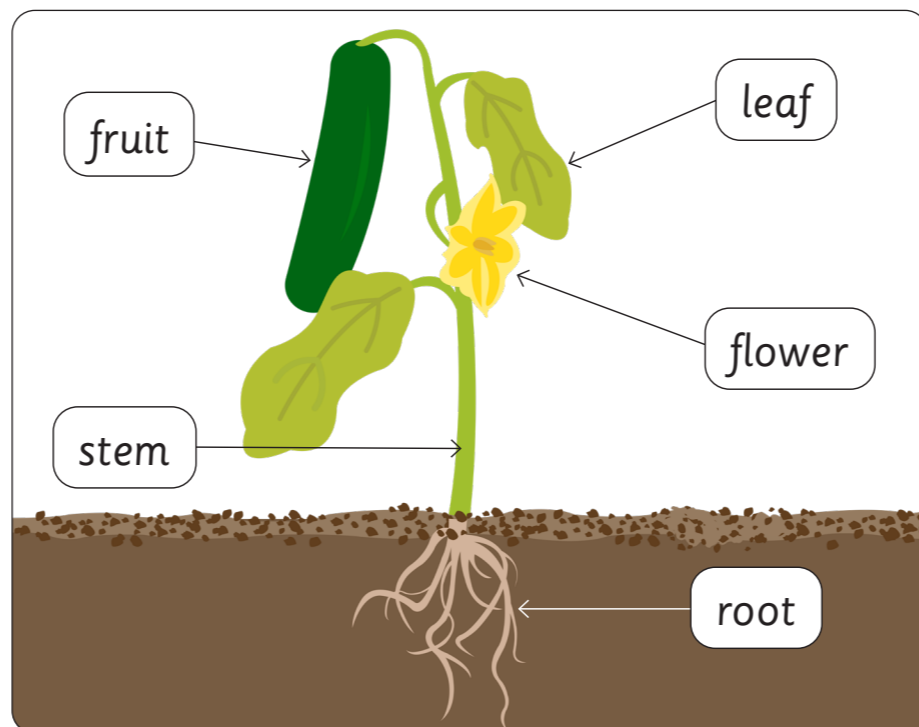
winter



spring

Plant parts

Plants have five main parts.



Trees

Trees are plants. A tree has a woody stem called a trunk, which is covered with bark. The trunk supports the branches of the tree.



Seeds and bulbs

Plants grow from seeds or bulbs. Inside seeds and bulbs are tiny plants waiting for the right conditions to start growing. Seeds are usually small and come in different shapes and sizes. Bulbs are bigger than seeds and have a rounded shape and papery coating.



seeds

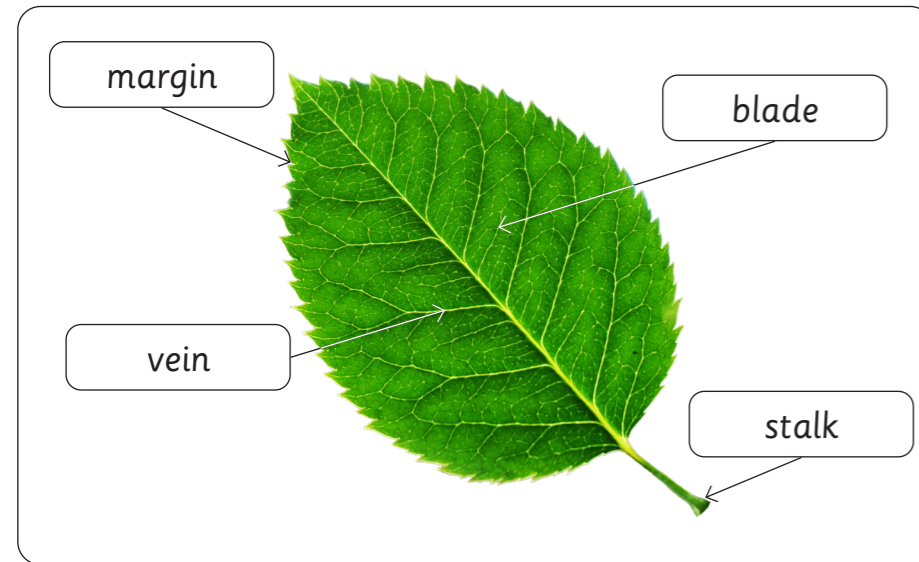


bulbs



Leaf parts

There are four main parts of a leaf. The blade is a leaf's large flat surface with thin lines called veins going across it. The margin is the leaf's edge and the stalk joins the leaf to the stem of the plant.



Types of leaf

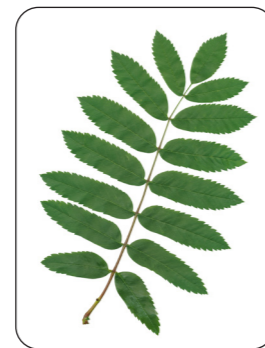
There are five types of leaf.



simple



palmate



compound



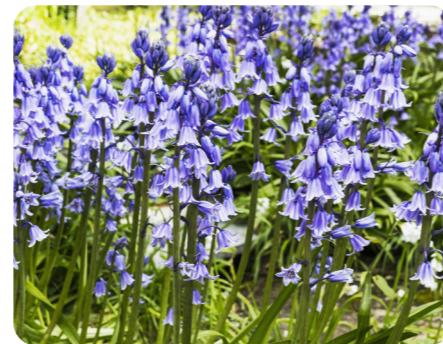
lobed



needle-like

Common wild plants

There are many different types of wild plant. They differ in their parts and features.



bluebell



bramble



cleavers



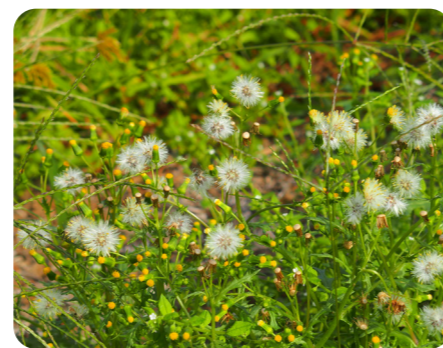
creeping buttercup



daisy



dandelion



groundsel



stinging nettle

Importance of plants

Plants are important for many reasons.

Shelter

Many animals live on plants or use them to build their nests. The plant protects them from the weather and other dangers.



Food

Animals, including humans, eat plants. Some animals only eat plants. They are known as herbivores.



Materials

Many everyday materials are made from plants, such as paper, wood and natural fabrics.



Glossary

bark The tough, woody outer covering of a tree's trunk, roots and branches.

dormant Something that is not active or not growing but will become active or grow in the future.

herbivore An animal that only eats plants.

